

HERITAGE
on
6TH STREET

HERITAGE

on

6TH STREET



Warmington
RESIDENTIAL

HERITAGE *on* 6TH STREET

CLASSIC ARCHITECTURE. MODERN COMFORTS. ENDURING VALUE.

Heritage on 6th Street has put down roots in Gilroy, a residential community cherished for its agricultural history, small-town charm, and strong sense of community. This collection of spacious, family-sized homes on oversized lots blends timeless appeal with modern technology, creating the perfect environment for neighborly connections.

Thoughtfully designed with quality craftsmanship, contemporary interiors, and sought-after amenities—including owned solar with Tesla Powerwall 3 battery storage—Heritage on 6th Street offers a setting that is within walking distance to downtown Gilroy yet easily accessible for commuters, ensuring a lifestyle of comfort, convenience, and efficiency.

Here, you have a rare opportunity to embrace the heritage of fine family living while creating your legacy for generations to come. Welcome to Heritage on 6th Street—Gilroy's newest hometown.

HERITAGE *on* 6TH STREET

PLAN 1



PLAN 1A | LOT 16

PLAN 2



PLAN 2A | LOT 7

4 BEDROOMS + LOFT | 3.5 BATHS | APPROX 2,942 SQ FT



PLAN 1B | LOT 12



PLAN 1C | LOT 4

5 BEDROOMS + LOFT + DEN | 4.5 BATHS | APPROX 3,366 SQ FT



PLAN 2B | LOT 9

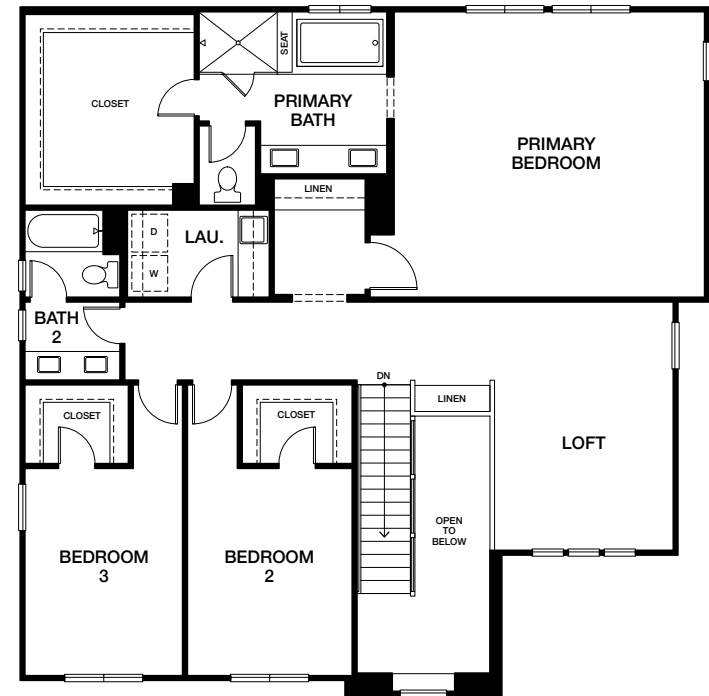
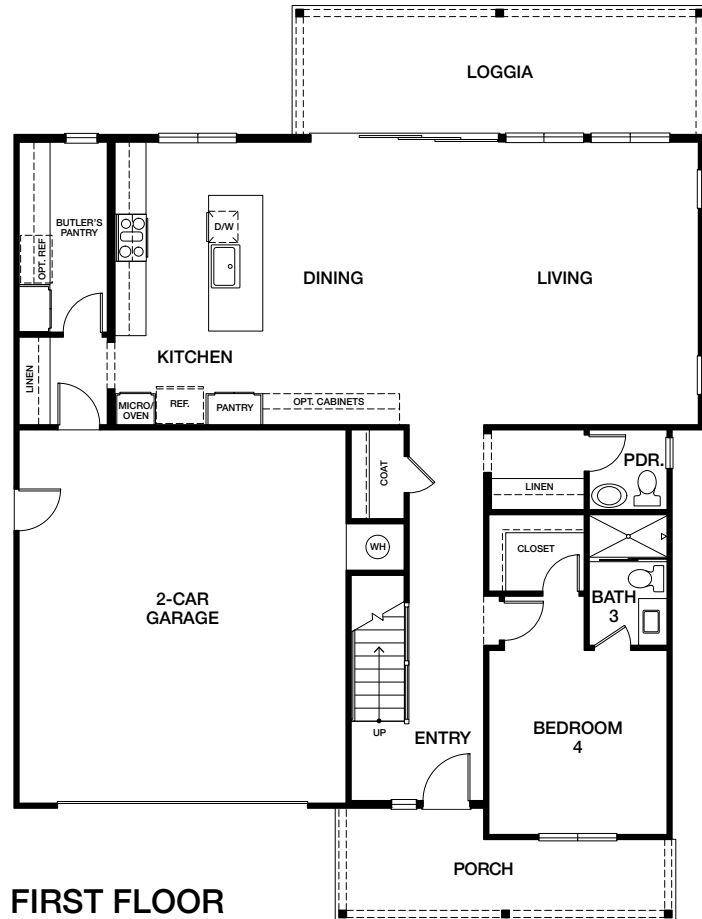


PLAN 2C | LOT 11



PLAN 1

4 BEDROOMS + LOFT | 3.5 BATHS | APPROX 2,942 SQ FT

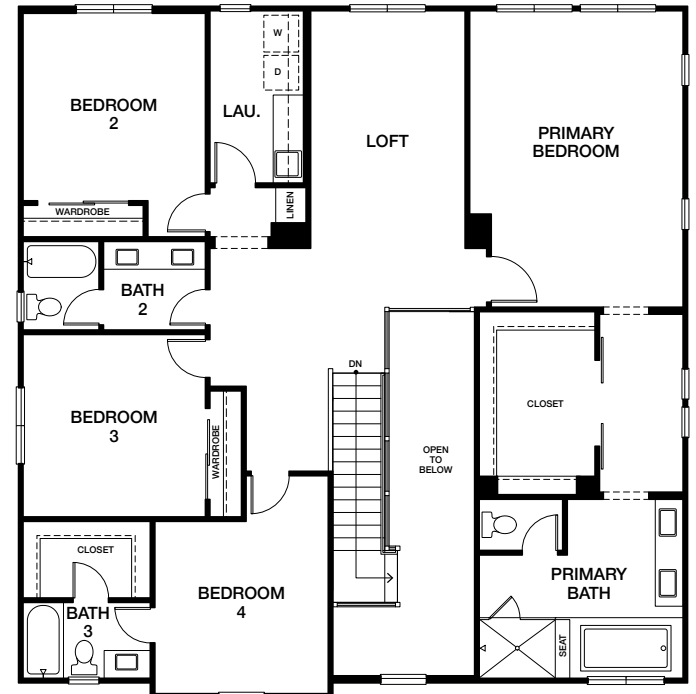
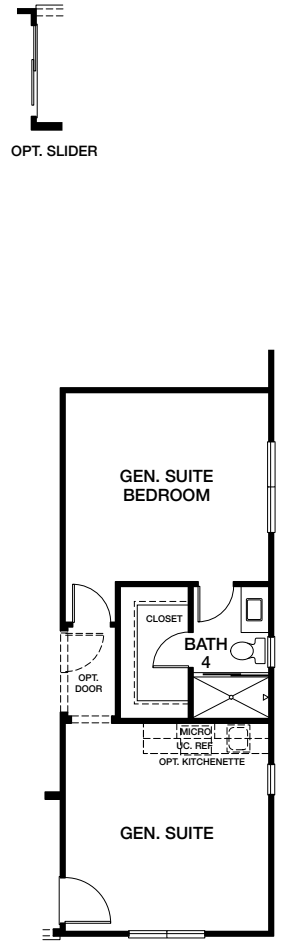
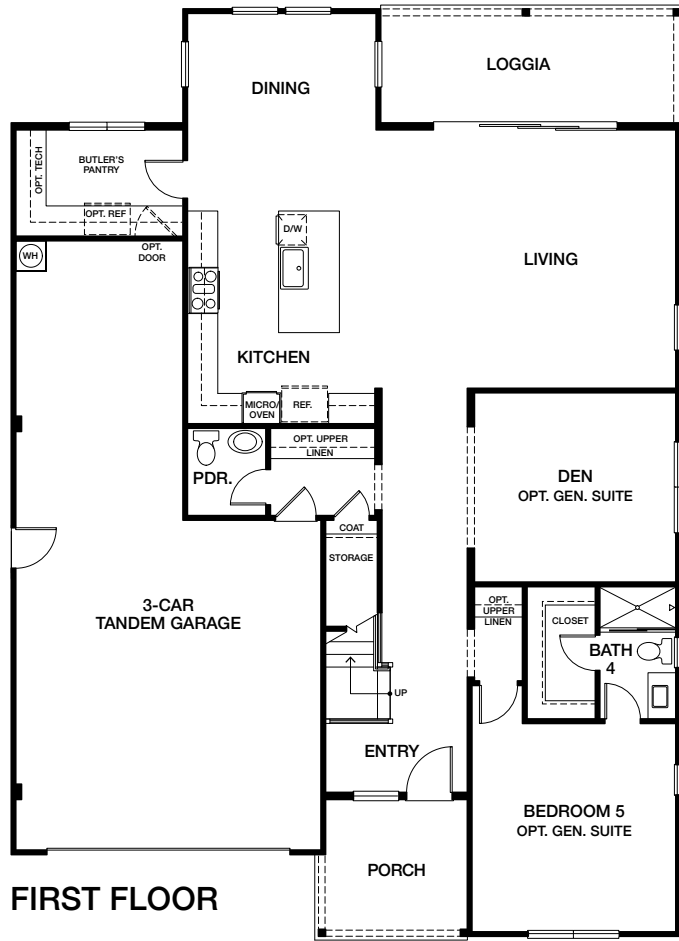




PLAN 2

5 BEDROOMS + LOFT + DEN | 4.5 BATHS | APPROX 3,366 SQ FT

6TH STREET



Square footages are approximate only. All renderings, floor plans and maps are artist's conception and are not intended to be an accurate representation of buildings, fencing, walks, driveways or landscaping and are not necessarily to scale. Many items vary considerably from homesite to homesite including, but not limited to, porches, storage areas, windows, doors, cabinets and floor plan layout details. Specification and appointments of the model home and/or floor plans depicted may be unique and not necessarily replicated or available in all homes and are subject to change at any time without notice. See a sales representative for details. 02.24.25



Warmington
RESIDENTIAL



HERITAGE *on* 6TH STREET

DESIGN CURATED INTERIORS

A SIMPLE APPROACH TO STYLE.

At Heritage on 6th Street in Gilroy, curated interior designs bring balance and harmony to your new home. Our designers have chosen today's most sought-after colors, materials, and textures, assembling five collections thoughtfully applied to each home based on its architecture, site orientation, and unique characteristics. These cohesive and elegant interior design palettes extend to cabinetry, flooring, fixtures, and other details, ensuring a seamlessly designed living experience.



[VIEW INTERIOR PACKAGES](#)

INCLUDED FEATURES

HAND-SELECTED, DESIGNER PERFECTED.

These homes are filled with premium appointments that were thoughtfully selected to enhance their beauty, comfort, and convenience. The selection of features has been elevated, so your lifestyle will be, too. See what's included here.



[VIEW FEATURES](#)

ALL-ELECTRIC HOMES PLUS OWNED SOLAR

MODERN AMENITIES, CLASSIC COMFORTS.

Homes at Heritage on 6th Street run entirely on electricity. Powered by owned solar and paired with a Tesla Powerwall 3 battery, these homes eliminate gas utility fees and provide reliable, clean energy at lower costs.

They feature modern, energy-efficient appliances and systems—like induction cooktops, electric heating, and water heating—that help lower utility bills, improve indoor air quality, and offer greater energy independence.

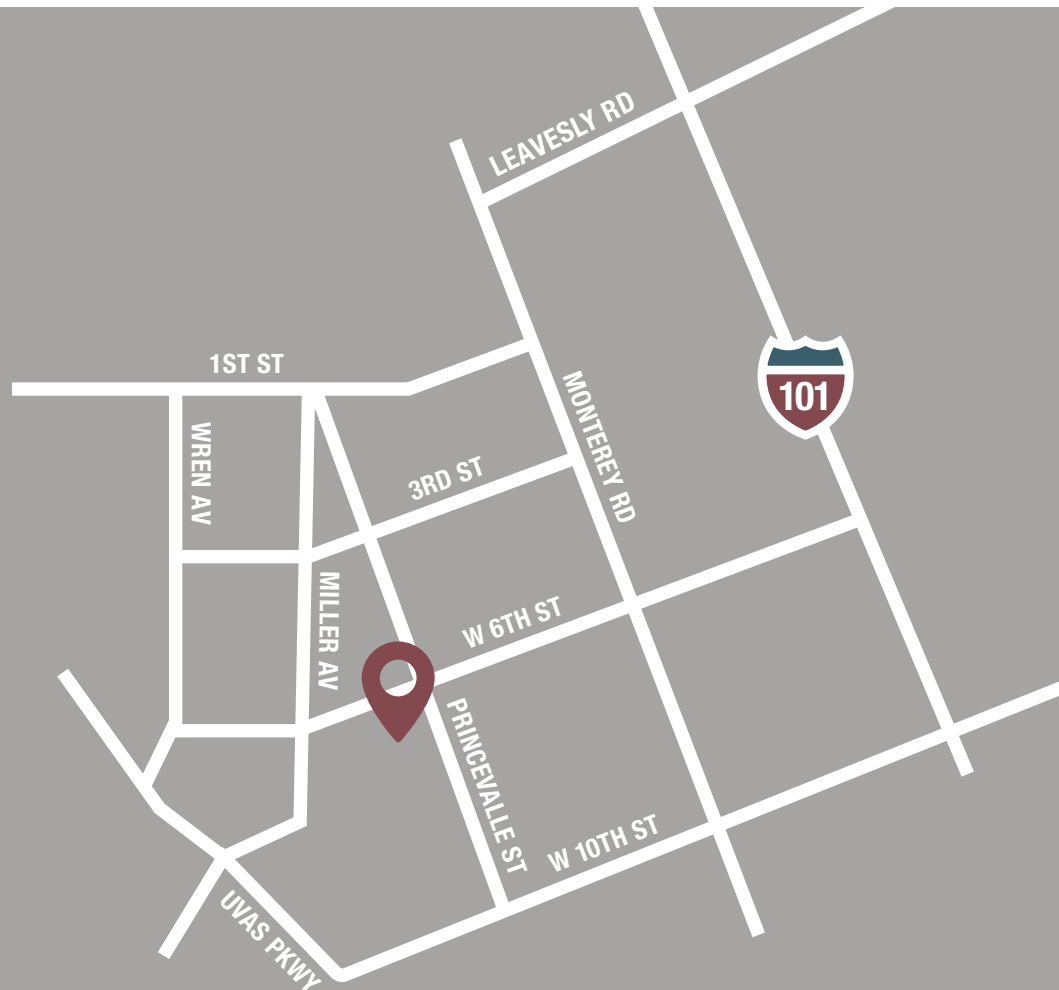
It's the perfect blend of comfort, efficiency, and eco-friendly living.

As a Heritage on 6th Street homeowner, you will enjoy the benefits of living in a Net Energy Metering 2.0 community. Contact PG&E to learn more about the advantages of NEM 2.0 on your utility savings.

HERITAGE
on
6TH STREET



HERITAGE *on* 6TH STREET



SMALL-TOWN CHARM AND PLENTY OF THINGS TO DO

Gilroy offers a welcoming atmosphere with a vibrant downtown full of dining, shopping, and local events that bring the community together. The city is known for its excellent schools and an inviting place for families to grow and thrive. Enjoy the outdoors with local parks, hiking trails, and nearby vineyards, or attend one of the many community events that happen year-round.

Plus, with easy access to major highways, Gilroy's commuter-friendly location is perfect for those working in Silicon Valley or nearby cities. Whether you're into outdoor activities, family fun, or just want to take it easy and enjoy an idyllic residential setting, Gilroy has something for everyone.

HERITAGE ON 6TH STREET

700 W. 6TH STREET | GILROY, CA 95020 | HERITAGEON6TH.COM | 669.201.0866



Warmington
RESIDENTIAL